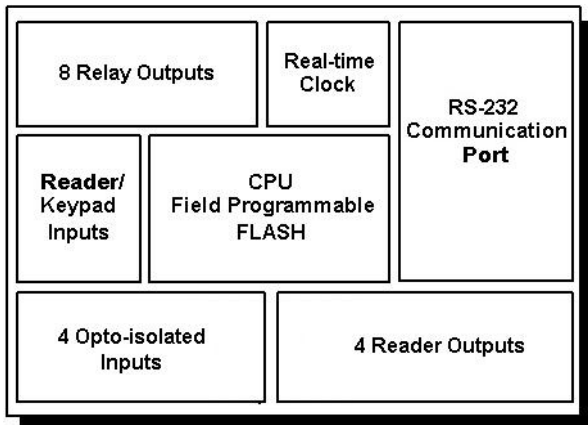


Description:

The AccessEmulator™ is a powerful tool to automate and enhance the testing of access control systems. Multiple events are created that emulate real-world activity on your hardware. Extensive diagnostic features save troubleshooting time on field installations.

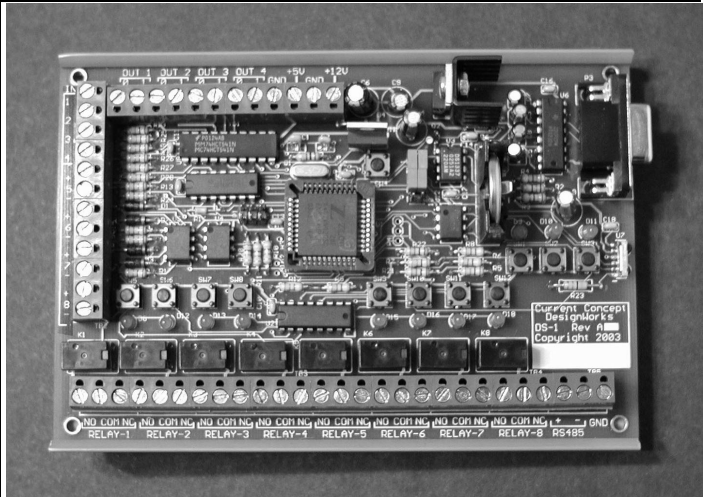
Benefits:

- Saves time/cost in:
 - Development testing
 - QA/SQA testing
 - Testing on-site systems and components
 - Troubleshooting systems and components
 - Testing reader output
 - Decoding access cards
 - Decoding access card formats
- Enables
 - Automated testing
 - Repeatable test events/results
 - Performance testing



Features:

- RS-232 communication port
- Real Time Clock, battery-backed
- Reconfigurable through FLASH programming
- 8 Relay outputs (Emulate REXs, Door Switches, supervisory circuits, etc.)
- 8 digital outputs (emulate up to 4 readers)
- 4 digital inputs (decode up to 2 readers)
- 4 opto-isolated inputs (monitor door strike or other system outputs)
- +5V DC power for test readers
- Automated and manual event sequence control
- Terminal block connectors
- Board in SnapTrack™ for easy mounting



Applications:

- On-site diagnosis and testing of complex access control system functions
 - Test readers' swipe data
 - Display card data (raw and formatted decodes)
 - Manually swipe in test card numbers
 - Log activity to PC, printer, etc.
- Performance testing
 - Generate desired event rate (real-world to saturation)
 - Record events and timing
 - Log activity to PC, printer, etc.
- Emulate access events
 - Card swipes (valid/invalid card, format, facility code, etc.)
 - Multiple card sequencing
 - Keypad entries
 - REX switch events
 - Door switch events (open, forced, held, supervisory circuit tests)
 - Region events (anti-passback, two-man rule, etc.)
- Flash programmable for custom functions (design to your spec – contact sales for quote)
 - Card format translator
 - Reader wedge
 - Event-based outputs
 - Concentrator/extender
 - Smart card controller
 - Your application requirement

For more information on the AccessEmulator™, please click on the Test Products tab at

www.ccdesignworks.com